

**Faculty of Engineering**  
**Department of Computer Science and Engineering**  
**Methodology to identify the Slow-learners and Fast-learners**

The process of identifying the slow learner students and Fast learner students is given below:

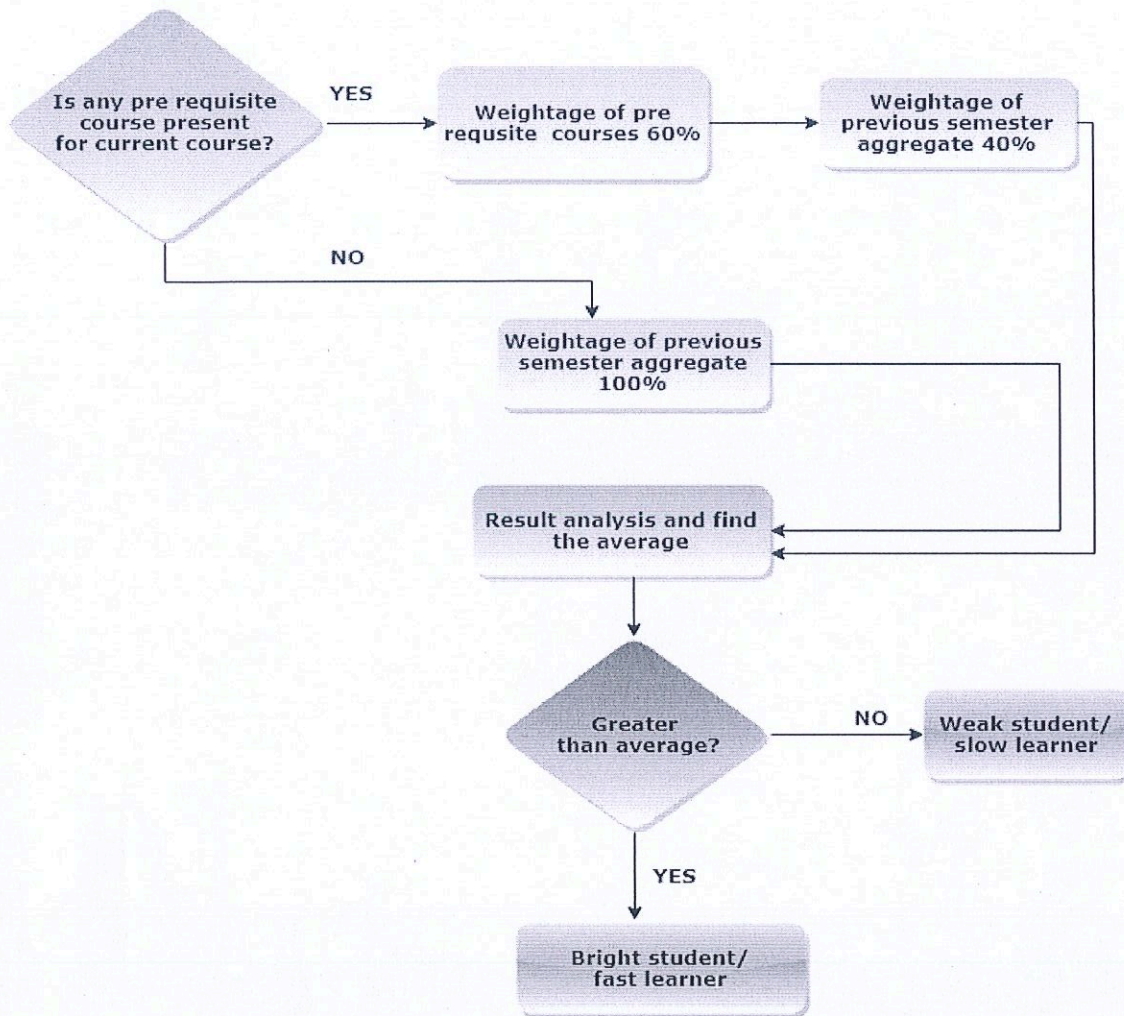
- As per the marks of the students in the pre requisite courses (60%) for a particular course plus the marks score by student in their previous semester (40%).
- The average of these marks identifies the threshold for demarcation of Fast learner and slow learner students.
- If the student scores more than the average then he/she comes under Fast learner student category and If the student scores more than the average then he/she comes under Slow learner student category.

However for courses which do not have pre requisites, the marks scored by the students in the previous semester can be taken as a reference.

It is mandatory for all the faculty members to identify the Fast learner and Slow learner students in their respective courses as per the guidelines mentioned above.

The faculty members maintain a list of Fast learner and Slow learner students of their respective courses in the course files. It also requires the faculty members to maintain the actions taken for Slow learner students like remedial classes. The course handling faculty member will then analyze the performance of the students who took the remedial classes or assignments and an impact report will be maintained in the course file so as to analyze the gap if certain CO are not met.

The Fast learner students are encouraged to take up project activity based tasks to supplement and augment the academic activities. The same are implemented and converted into a product by involving the advanced learners of the department. This gives a much needed exposure for the students to deadline based product development which usually happens at the industry.



Process of identifying the Slow learners and Fast learners

*B. N. Prasad*  
Signature of the faculty Member

*[Signature]*  
Signature of the HOD  
CHIST (DEEMED TO BE UNIVERSITY)  
Department of Computer Science and Engineering  
Faculty of Engineering